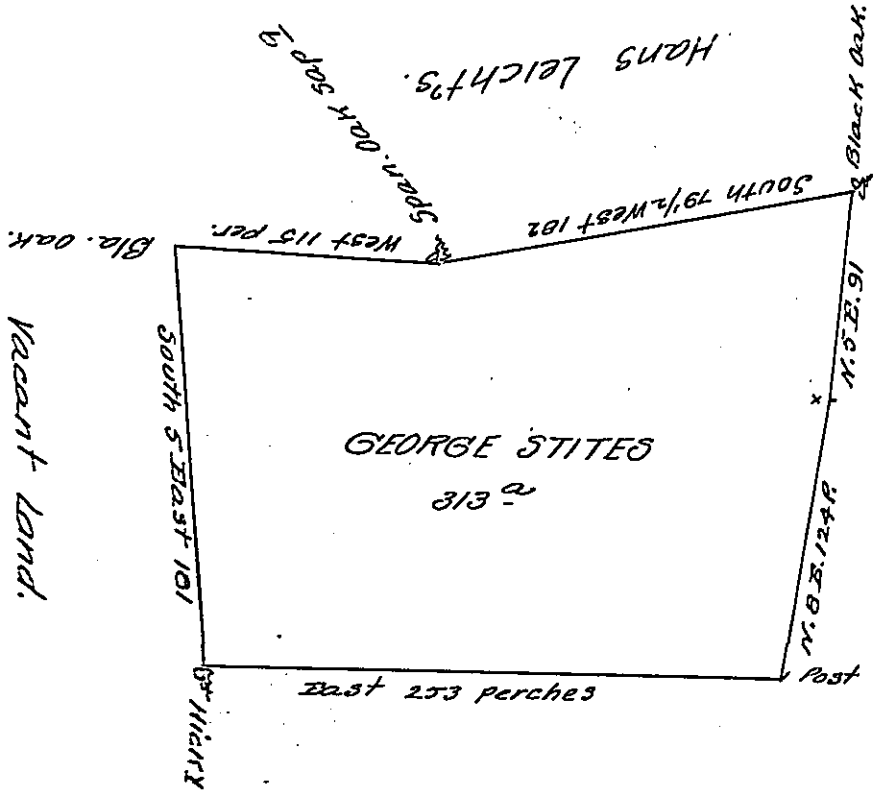


pat a-8-354

a 5-76



a 58-276

John Tibbins.

pg 160

A Draught of a tract of Land situate in Quitapetela Township in the County of Lancaster Containing Three hundred and thirteen acres and the usual allowance of six acres P Cent for Roads &c^o Surveyed the 26th day of June 1739 for George Stites in pursuance of a Warrant from the Proprietaries Dated the 18th day of December 1737

P W^o Parsons

IN TESTIMONY that the above is a copy of the original remaining on file in the Department of Internal Affairs of Pennsylvania, made conformably to an Act of Assembly approved the 16th day of February, 1833, I have hereunto set my Hand and caused the Seal of said Department to be affixed at Harrisburg, this thirteenth day of September 1906.

Loach P. ...
Secretary of Internal Affairs.